

mindray

DC-40 Full HD

Diagnostic Ultrasound System

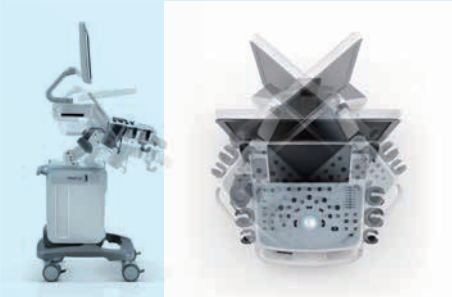
**Scanning with Exceptional
Capability**

Full HD)))



DC-40 Full HD

Diagnostic Ultrasound System



Rotatable and height adjustable control panel with integrated design



21.5" full HD LED Monitor, 180 degree rotation



Gel warmer



13.3" slim full HD LED touchscreen, 30 degree rotation



Dedicated endocavity transducer holder

Retractable QWERTY keyboard



Storage plate

4 active transducer sockets

DC-40 Full HD

Diagnostic Ultrasound System

Higher Imaging Definition

'Keep on innovating' is the motivation of Mindray, and powered by the Full HD display, classic imaging technologies, and optimized transducer family, DC-40 with Full HD provides you outstanding imaging clarity for wider range of clinical diagnosis.

Classic imaging technologies: enhancing the quality for diagnosis

- iClear (speckle-reduction imaging technology)
- PSH (Phase Shift Harmonic imaging)
- iBeam (spatial-compounding imaging technology)

Optimized transducers family: wide range of application coverage

With versatile transducers combination, DC-40 with Full HD offers the best balanced performance across a wide range of applications, and produces advanced image quality in a wide variety of patient types.

Combo Wave

ComboWave is a unique transducer technology for Linear. By the applying of a new type of composite piezoelectric material, DC-40 with Full HD obtains better acoustic spectrum and lower acoustic impedance, and produces better performance of linear transduce

Dual-Volume

Combining the convex volume, endocavity volume, and related application packages, DC-40 with Full HD introduces the "Dual-Volume" solution, which provides dedicated 4D women care from the prenatal exams to the pregnancy check.

Urological solution

The specially-designed biplane transducers, including the linear/convex and dual micro-convex, support versatile urological solution for your mind-extension.

One-Key exam mode switch

The recent exam modes are listed on the right side of touchscreen. You can change the frequently-used mode by a single keystroke to simplify the workflow for efficiency.

Higher Ergonomic Design

Full range of application tools: accuracy guarantee with convenience

DC-40 with Full HD delivers a range of tools that maximize diagnostic accuracy with convenience. Covering General Imaging, OB/GYN and Cardiology, DC-40 with Full HD provides you complete solution for mainstream clinical applications, with simplified workflow for efficiency.

iTouch

iTouch is a one-button auto image optimization solution, which is able to optimize the imaging quality automatically, including in B/PW mode.

Smart OB

Smart OB provides accurate auto measurements for most frequently examined fetal parameters including BPD, OFD, HC, AC and FL.

Smart FLC

Smart FLC is a tool to automatically detect the number of follicles, and calculate the of each follicle. It also provides a report with color marks for study.

Smart Face

Smart Face provides fast and intelligent optimization for fetal face with one-touch operation. It immediately removes face with one-touch operation. It immediately removes optimal view of the fetal face with more simplicity.

iLive

Integrating a ray-casting algorithm with a new virtual lighting modality, iLive generates an amazingly realistic view of the fetus with human skin-like images.

Higher Reliable Dependence

For decades, Mindray cares about using intelligence to enhance the safety, accuracy and stability of its products, to ensure the satisfaction during your daily diagnosis.

Shenzhen Mindray Bio-Medical Electronics Co., Ltd.

Mindray Building, Keji 12th Road South, High-Tech Industrial Park,

Nanshan, Shenzhen, 518057, P. R. China.