

mindray

DP-21

Power

Digital Ultrasonic Diagnostic Imaging System



DP36/DCN3 PRO/DC32 FULL HD/DC-40 CRYSTAL

**DP21 POER IN THE MOST ECONOMICAL MODEL
COMPARING WITH DP-10/15/20/25/30/36 POWER**

DP-21^{Power}

Digital Ultrasonic Diagnostic Imaging System

Good image quality and compact ergonomic design with Full Screen, make the new DP-21^{Power} edition your ideal choice of B/W ultrasound. DP-21^{Power} edition can accompany you at an all new level. Built-in battery and mobile trolley provides you a limitless ultrasound solution.



Ergonomic Mobile Design with Full Screen

- 12.1 inch high definition LED with full screen design
- 30 degree tilting angle adjustable monitor
- 1 universal transducer connector
- User friendly control panel with backlit
- Light and compact design for extreme portability

Advanced Imaging Technologies

- Tissue Harmonic Imaging for enhanced contrast resolution
- iClear for Speckle Reduction Imaging, providing clear and sharp lesion contours
- iTouch for quick image optimization
- iZoom for instant full screen image zoom

Convenient Workflow

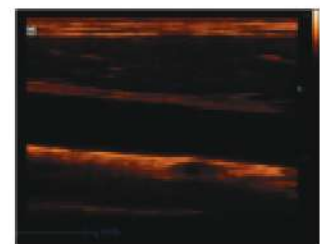
- iScanHelper offers ultrasound tutorial for your practice
- iStorage for instant images and reports transfer to PC
- User-defined keys for programmable personalized operations
- 1.5h uninterrupted scanning with rechargeable battery
- 500GB hard disk for large patient data storage



Liver



Uterus



Carotid



Main Unit



www.mindray.com

mindray
healthcare within reach

Mindray Building, Keji 12th Road South,
High-tech Industrial Park, Nanshan, Shenzhen 518057, P.R. China
Tel: +86 755 8168 8998 Fax: +86 755 26562680
E-mail: intl-market@mindray.com www.mindray.com

mindray are registered trademarks or trademarks owned by Shenzhen Mindray Bio-medical Electronics Co., Ltd.
© 2017 Shenzhen Mindray Bio-Medical Electronics Co., Ltd. All rights reserved. Specifications subject to changes without prior notice.
P/N: NG-BC-10-210285x4P-20170725

mindray