

4 Incubation Channels,
1 Emergency Test Channel!



Getein1160

Immunofluorescence Quantitative Analyzer

Getein1160 Immunofluorescence Quantitative Analyzer is a rapid, compact, user-friendly, multi-item analyzer that provides point-of-care testing and saves diagnosis time for patients. With **4 test channels** and **32 °C constant incubation environment**, Getein1160 could offer timely, accurate and efficient testing for a wide range of scenarios.

Benefits

The diagram shows the Getein 1160 analyzer from a top-down perspective. The device is white with a black top surface. A large touchscreen display is on the top surface, showing a blue interface with icons for 'Start', 'Stop', 'Run', 'Menu', and 'Settings'. Below the screen, the text 'Getein 1160' is visible. The dimensions are indicated with blue lines and text: 152 mm height, 276 mm depth, and 299 mm width. A blue curved arrow points from the 'Constant Temperature' feature to the top of the device. Another blue curved arrow points from the 'Multiple Channels' feature to the right side of the device. A third blue curved arrow points from the bottom of the device to the 'Auto Cartridge Collection' feature.

Constant Temperature
32°C constant test environment, allowing for more accurate test results

Multiple Channels
4 incubation channels
+
1 emergency test channel

- **Portable**

Dimensions :299 mm (W) × 276 mm (D) × 152 mm (H)
Weight :4 kg

- **Detection Performance Improved**

Reduced influence by temperature and improved detection accuracy

- **Convenient**

Easy to operate, user friendly interface

- **Instant Results**

Get results in 3-15 minutes

- **Reliable Accuracy**

Good correlation with CLIA method

- **Auto Cartridge Collection**

Automatically receive the used test cards when the test is finished

Technical Specifications



Application



Laboratory



Clinic



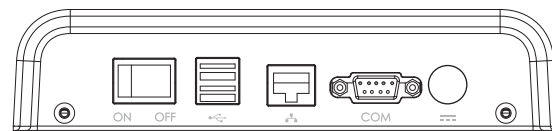
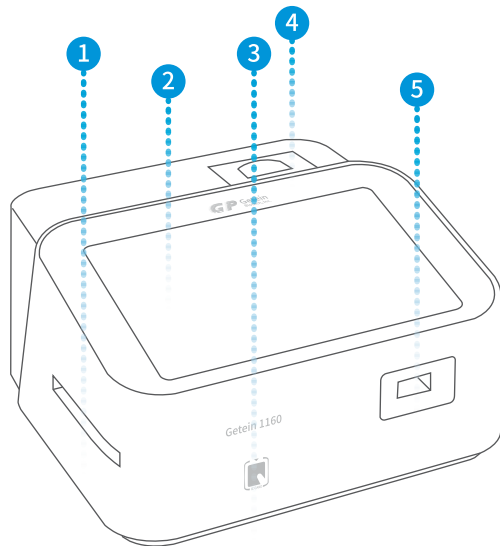
Emergency



Ambulance

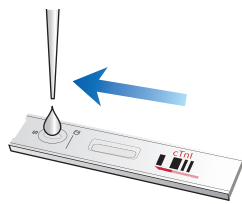


ICU



- 1 Card Exit
- 4 Built-in thermal Printer
- 2 10.1-inch Touch Screen
- 5 Card Inlet
- 3 SD Card Recognition Zone

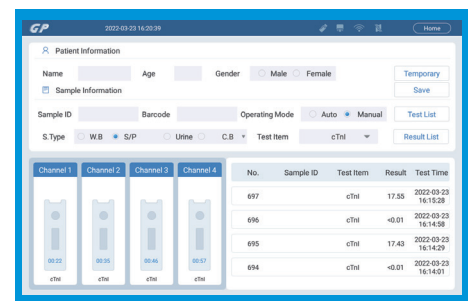
Operation Procedure



1 Sample dispense



2 Insert test cards, four allowed at the same time



3 Waiting in incubation



4 Result show and print

TEST ITEMS

Cat. #	TEST ITEMS	DISEASES	CUT-OFF VALUE	SAMPLE TYPES	MEASURING RANGE	SAMPLE VOLUME	REACTION TIME	QUALIFICATION
Cardiac Markers								
IF5001	cTnI	Myocardial infarction	0.10 ng/mL	S/P/WB	0.10-50.00 ng/mL	100 µL	10 min	NMPA CE
NEW IF5098	TnT	Myocardial infarction	14.0 pg/mL	S/P/WB	10.0-10000.0 pg/mL	100 µL	15 min	CE
IF5089	BNP	Heart failure	100.0 pg/mL	P/WB	5.0-5000.0 pg/mL	100 µL	10 min	CE
IF5002	NT-proBNP	Heart failure	300 pg/mL	S/P/WB	100-35000 pg/mL	100 µL	10 min	NMPA CE
IF5005	CK-MB/cTnI/Myo	Myocardial damage /infarction	CK-MB: 5.00 ng/mL cTnI: 0.10 ng/mL Myo: 70.0 ng/mL	S/P/WB	2.50-80.00 ng/mL 0.10-50.00 ng/mL 30.0-600.0 ng/mL	100 µL	10 min	NMPA CE
IF5012	CK-MB/cTnI	Myocardial damage /infarction	CK-MB: 5.00 ng/mL cTnI: 0.10 ng/mL	S/P/WB	2.50-80.00 ng/mL 0.10-50.00 ng/mL	100 µL	10 min	CE
IF5014	H-FABP	Myocardial damage	6.36 ng/mL	S/P/WB	1.00-120.00 ng/mL	100 µL	3 min	CE
IF5016	CK-MB/cTnI/H-FABP	Myocardial damage /infarction	CK-MB: 5.00 ng/mL cTnI: 0.10 ng/mL H-FABP: 6.36 ng/mL	S/P/WB	2.50-80.00 ng/mL 0.10-50.00 ng/mL 2.00-100.00 ng/mL	100 µL	10 min	CE
IF5018	CK-MB	Myocardial injury	5.00 ng/mL	S/P/WB	2.50-80.00 ng/mL	100 µL	10 min	CE
Coagulation Markers								
IF5006	D-Dimer	Venous thromboembolism	0.50 mg/L	P/WB	0.10-10.00 mg/L	100 µL	10 min	NMPA CE
Inflammation								
IF5003	hs-CRP+CRP	Cardiovascular inflammation /normal inflammation	3.0 mg/L 10.0 mg/L	S/P/WB/ Fingertip blood	0.5-200.0 mg/L	10 µL	3 min	CE
IF5007	PCT	Sepsis, bacterial infection	0.10 ng/mL	S/P/WB	0.05-50.00 ng/mL	100 µL	15 min	NMPA CE
IF5015	PCT/CRP	Sepsis, bacterial infection	PCT: 0.10 ng/mL CRP: 3.0 mg/L	S/P/WB	0.10-50.00 ng/mL 0.5-200.0 mg/L	100 µL	15 min	CE
IF5044	SAA	Bacterial/Virus infection	10.0 mg/L	S/P/WB/ Fingertip blood	5.0-200.0 mg/L	10 µL	5 min	CE
IF5090	SAA/CRP	Neonatal sepsis, Bacterial/virus infection	SAA: 10.0 mg/L CRP: 10.0 mg/L	S/P/WB/ Peripheral blood	5.0-200.0 mg/L 0.5-200.0 mg/L	10 µL	5 min	NMPA CE
IF5088	IL-6	Acute inflammation	7.0 pg/mL	S/P/WB/ Peripheral blood	1.5-4000.0 pg/mL	100 µL	15 min	CE
Renal Function								
IF5008	CysC	Acute and chronic renal diseases	0.51-1.09 mg/L	S/P/WB	0.50-10.00 mg/L	10 µL	3 min	NMPA CE
IF5009	mAlb	Diabetic nephropathy, hypertensive nephropathy	20.0 mg/L	Urine	10.0-200.0 mg/L	100 µL	3 min	CE
IF5010	NGAL	Acute kidney injury	Serum: 200.0 ng/mL Urine: 100.0 ng/mL	S/Urine	50.0-5000.0 ng/mL	10 µL	10 min	NMPA CE
IF5011	β ₂ -MG	Acute and chronic kidney diseases/tumours	0.80-3.00 mg/L	S/P/WB	0.50-20.00 mg/L	10 µL	3 min	NMPA CE
Diabetes Mellitus								
IF5017	HbA1c	Diabetes mellitus	3.80%-5.80%	WB	2.00%-14.00%	10 µL	5 min	NGSP NMPA IFCC CE
Metabolic Marker								
IF5031	25-OH-VD	Osteomalacia, osteoporosis	30.00-50.00 ng/mL	S/P	8.00-70.00 ng/mL	40 µL	15 min	CE
Thyroid Function								
IF5024	TSH	Thyroid malfunction	0.27-4.20 µIU/mL	S/P	0.10-50.00 µIU/mL	100 µL	15 min	NMPA CE
IF5022	T3	Hyperthyroidism, hypothyroidism	1.30-3.10 nmol/L	S/P	0.30-10.00 nmol/L	40 µL	15 min	CE
IF5023	T4	Hyperthyroidism, hypothyroidism	59.00-154.00 nmol/L	S/P	5.40-320.00 nmol/L	40 µL	15 min	CE
IF5067	ft3	Hyperthyroidism, hypothyroidism	3.10-6.80 pmol/L	S/P/WB	0.40-50.00 pmol/L	40 µL	15 min	CE
IF5068	ft4	Hyperthyroidism, hypothyroidism	12.00-22.00 pmol/L	S/P/WB	0.30-100.00 pmol/L	40 µL	15 min	CE

Cat. #	TEST ITEMS	DISEASES	CUT-OFF VALUE	SAMPLE TYPES	MEASURING RANGE	SAMPLE VOLUME	REACTION TIME	QUALIFICATION
Reproduction/Fertility								
IF5013	HCG+β	Fertility	5.1 mIU/mL	S/P	5.0-100000.0 mIU/mL	100 μL	10 min	CE
IF5055	LH	PCOS, infertility evaluation	Refer to User Manual	S/P	0.20-150.00 mIU/mL	100 μL	15 min	CE
IF5056	FSH	PCOS, infertility evaluation and pituitary disorders	Refer to User Manual	S/P	0.20-150.00 mIU/mL	100 μL	15 min	CE
IF5066	AMH	Fertility, PCOS, gonadal function, precocious/late puberty	Refer to User Manual	S/P	0.10-20.00 ng/mL	200 μL	15 min	CE
IF5048	PRL	Infertility, gonadal disorders	Refer to User Manual	S/P	0.50-200.00 ng/mL	100 μL	15 min	CE
IF5071	Prog	Infertility, evaluation of ovulation	Refer to User Manual	S/P	0.10-40.00 ng/mL	100 μL	15 min	CE
Tumor Markers								
IF5053	tPSA	Prostate cancer	4.00 ng/mL	S/P	0.50-100.00 ng/mL	100 μL	15 min	
IF5072	fPSA	Prostate cancer	1.00 ng/mL	S/P	0.05-30.00 ng/mL	100 μL	10 min	
IF5050	AFP	Liver cancer, cancer of ovaries or testicles, etc.	7.0 ng/mL	S/P	2.0-500.0 ng/mL	100 μL	15 min	CE
IF5051	CEA	Cancer marker: colon cancer etc.	4.7 ng/mL	S/P	2.0-500.0 ng/mL	100 μL	15 min	CE
Infectious Disease								
IF5057	Anti-HCV	Hepatitis C	1.00 S/CO	S/P	1.00-20.00 S/CO	100 μL	15 min	
IF5058	Anti-TP	Syphilis	1.00 S/CO	S/P	1.00-50.00 S/CO	100 μL	15 min	CE
IF5059	Anti-HIV	AIDS	1.00 S/CO	S/P	1.00-1000.00 S/CO	100 μL	15 min	
IF5064	HBsAg	Hepatitis B	1.00 IU/mL	S/P	1.00-100.00 IU/mL	100 μL	15 min	
NEW IF5063	Anti-HBs	Hepatitis B	10.00 mIU/mL	S/P/WB	10.00-1000.00 mIU/mL	100 μL	15 min	
IF5084	2019-nCoV IgM/IgG	COVID-19	1.00 COI	S/P/WB		100 μL	10 min	CE
NEW IF5091	SARS-CoV-2 Antigen	COVID-19	1.00 COI	Nasal swab/Saliva		100 μL	15 min	CE
NEW IF5095	SARS-CoV-2 Neutralizing Antibody	COVID-19	Refer to User Manual	S/P/WB/ Fingertip blood		40 μL	15 min	CE
IF5047	<i>H. pylori</i>	<i>H. pylori</i> infection	5.0 ng/mL	Stool	1.0-200.0 ng/mL	3 drops (about 100 μL)	10 min	CE
Specific Protein and Rheumatism								
NEW IF5075	RF	Rheumatoid arthritis	15.9 IU/mL	S/P/WB	10.0-640.0 IU/mL	100 μL	10 min	CE
NEW IF5076	ASO	Rheumatic fever, acute glomerulonephritis, group A streptococcal infection	400.0 IU/mL	S/P/WB	60.0-1370.0 IU/mL	100 μL	10 min	CE
NEW IF5029	Anti-CCP	Rheumatoid arthritis	25.0 U/mL	S/P/WB	10.0-400.0 U/mL	100 μL	15 min	CE
Others								
NEW IF5077	Ferritin	Anemia/tumors	Male: 30.00-400.00 ng/mL Female: 13.00-150.00 ng/mL	S/P	0.50-1000.00 ng/mL	10 μL	15 min	CE
NEW IF5069	Total IgE	Allergic disorders	Refer to User Manual	S/P/WB	1.00-2000.00 IU/mL	100 μL	15 min	CE

Coming Soon: VB-12, Folate, E2, T

GP Getein Biotech, Inc.

Add: No.9 Bofu Road, Luhe District, Nanjing, 211505, China
 Tel: +86-25-68568508/68568594
 Fax: +86-25-68568500
 E-mail: sales@getein.com.cn; overseas@getein.com.cn
 Web: www.getein.com

ISO 13485 FSC CE NMPA NGSP IFCC IVD



Some materials in this brochure come from freepik.